



Building Sustainable Futures

## BRICK-FACING PRECAST CONCRETE

[WWW.TECHRETE.COM](http://WWW.TECHRETE.COM)



# CONTENTS

- Introduction to Techrete.....2
- Manufacturing Process.....3
- Curved Brick & Arches.....4
- Sawtooth, Perforated & Basket Weave.....5
- Brick & Reconstructed Stone.....6
- Brick & Natural Stone.....7
- Brick-Facing Projects.....8
- Brick Look-a-Like Projects.....51
- Benefit of Brick-Facing Precast Panels.....54



# INTRODUCTION

Founded in 1985, Techrete is one of the leading companies in the design, manufacture, and installation of architectural precast cladding, serving the UK and Irish construction markets.

Techrete have a strong reputation for the successful delivery of challenging and complex projects, through a combination of industry leading knowledge and experience and by employing a proactive approach to all aspects of a project.

Our success over 40+ years is founded on the development of a manufacturing and technical expertise which dovetails state-of-the-art technology with skilled craft-based processes.

Techrete's experience spans multiple sectors including commercial, residential, retail, public, justice and more.

With the addition of our brick-cutting facility in Brigg in 2022 and with numerous, brick-facing projects completed all over Ireland and the UK, we are well positioned as one of the leaders in the ever-popular brick-facing precast concrete facade market.



# MANUFACTURING



› Brick slips are placed in the mould



› Steel reinforcement is placed in the mould



› Concrete is poured



› Panel is lifted out of the mould



› Panel is sprayed down with water



› Pointing is completed

# SPECIAL FEATURES

## CURVED BRICK & ARCHES



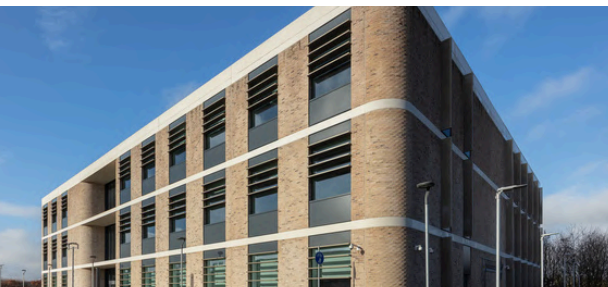
> Orchard Wharf, London



> i9 Wolverhampton Exchange



> Marylebone House, London



> Oxford Science Park



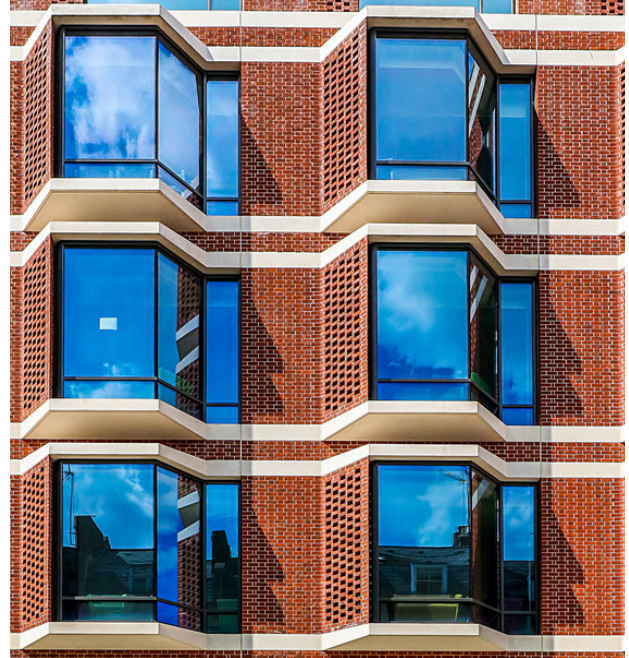
> Brammal Music School, Birmingham

# SPECIAL FEATURES

SAWTOOTH, PERFORATED & BASKET WEAVE



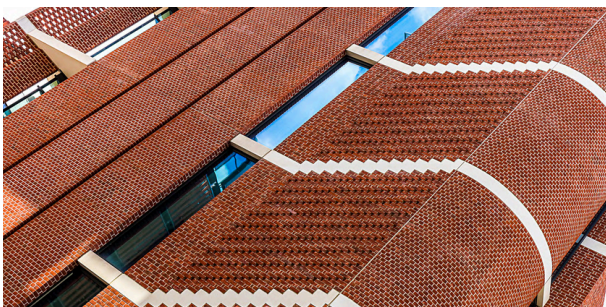
> Perforated brick : Marylebone House, London



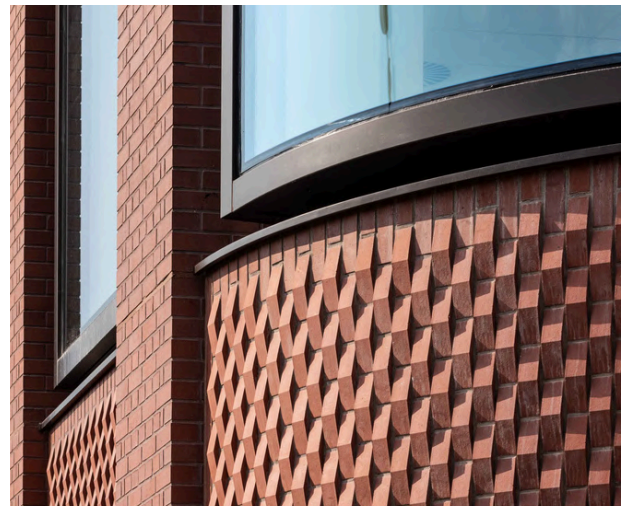
> Perforated brick : UCLH, London



> Sawtooth effect : Island, Manchester



> Sawtooth effect : UCLH, London



> Basket weave : i9 Wolverhampton Exchange

# BRICK & RECONSTRUCTED STONE



> One Kesidee Square, Kings Cross



> Boston Sdings, Dublin



> Grangegorman, Dublin



> Brent Cross, London



> Osiers Road, London



> Creed Court, London

WWW.TECHRETE.COM

# BRICK & NATURAL STONE



> Lancer Square, London



> Bramall Music Building, Birmingham



> Creed Court, London



> Creed Court, London



> Creed Court, London

# MARYLEBONE HOUSE, LONDON



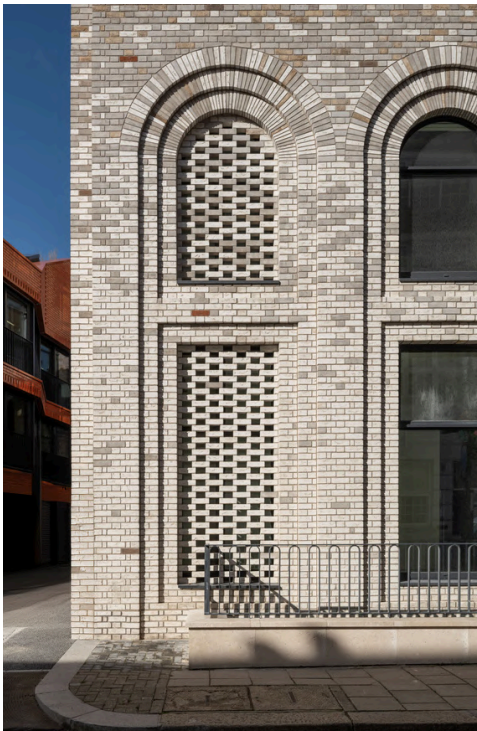
## PROJECT DETAILS

Contractor:  
Blenheim House Construction

Architect:  
Fletcher Priest Architects

Bricks: 7 types including  
mystique, bulmer red, cathedral  
grey & anselmo.

Details:  
84 brick-facing panels, double-  
storey arch panels.



WWW.TECHRETE.COM

# OSIERS ROAD, WANDSWORTH



## PROJECT DETAILS

Contractor:  
Hollybrook Homes

Architect:  
Burwell & Rolfe Judd

Bricks:  
Mystique / Weinerberger

Details:  
846 brick-facing &  
reconstructed stone panels  
with Sapphire balconies.



# BRENT CROSS TOWN, LONDON



## PROJECT DETAILS

Contractor:  
PCE / Galliford Try

Architect:  
Allies & Morrison

Bricks: Covagonda Green  
Heathflower, Ebony, Gunsmoke

Details:  
707 brick-facing &  
reconstructed stone panels with  
Sapphire balconies.



# FULTON & FIFTH, LONDON



## PROJECT DETAILS

Contractor: Regal / PCE

Architect:  
JTP / Ryder Architects

Bricks: Bellbrook Red Multi,  
Woodland Mixture, Perla White

Details:  
1,968 brick-facing &  
reconstructed stone panels with  
Sapphire balconies.



# 'ISLAND' JOHN DALTON ST., MANCHESTER



## PROJECT DETAILS

Contractor:  
Bowmer & Kirkland

Architect:  
Cartwright Pickard

Bricks:  
Natural Orange

Details:  
270 brick-facing panels with  
sawtooth detailing.



WWW.TECHRETE.COM

# GASCOIGNE ESTATE, BARKING



## PROJECT DETAILS

Contractor:  
Wates Construction

Architect:  
Fletcher Priest

Bricks:  
Vandersanden, Vande Mortel

Details:  
5 blocks, 1,326 brick-facing &  
reconstructed stone panels.



# BEGBROKE SCIENCE PARK



## PROJECT DETAILS

Contractor:  
Mace

Architect:  
MBBJ Architects

Bricks:  
Chobham Blend

Details:  
320 brick-facing &  
reconstructed stone panels.



# MILLROAD, ILFORD



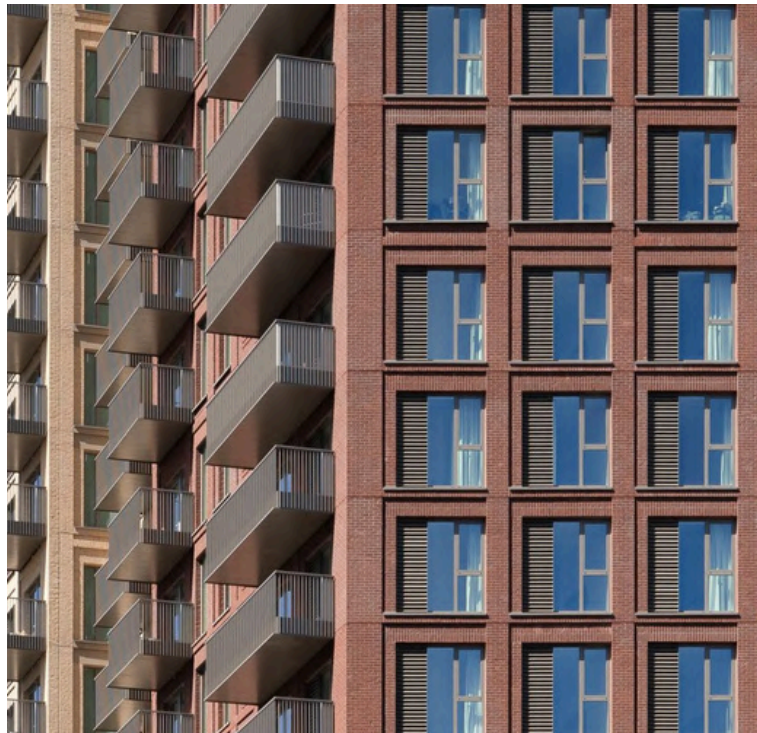
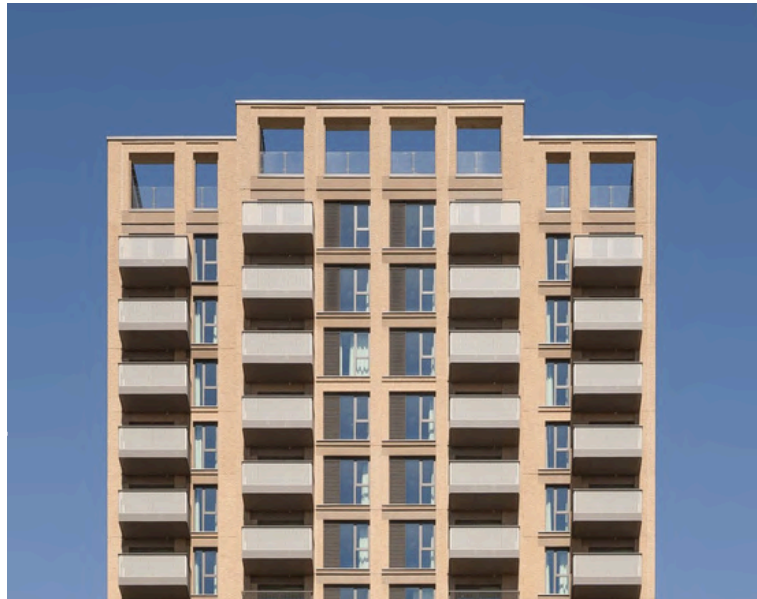
## PROJECT DETAILS

Contractor:  
Telford Homes

Architect:  
Stockwool Architects

Bricks: Staffordshire Blue,  
Haywood Red, Elgin Blend

Details:  
850 brick-facing panels.



# BELGROVE HOUSE, LONDON



## PROJECT DETAILS

Contractor:  
Mace

Architect:  
AHMM Architects

Bricks:  
Smead Dean Crowford Blend

Details:  
415 curved brick-facing  
panels.



# BERMONDSEY S&T, LONDON



## PROJECT DETAILS

Contractor:  
John Sisk & Son

Architect:  
AFK Studios

Bricks:  
Rustington Brown, Chobham  
Blend, Irlanda Bianco

Details:  
1,722 brick-facing &  
reconstructed stone panels.



# BERMONDSEY D&E, LONDON



## PROJECT DETAILS

Contractor:  
McAleen & Rushe

Architect:  
AFK Studios

Bricks:  
Rustington Brown, Draco

Details:  
647 brick-facing &  
reconstructed stone panels.



# 179 NEW BOND ST, LONDON



## PROJECT DETAILS

Contractor:  
McLaren Construction

Architect:  
Foster & Partners / Veretec

Bricks:  
S.Anselmo BB bricks

Details:  
129 75mm brick-facing &  
reconstructed stone panels.



# KINGS ROAD, CHELSEA



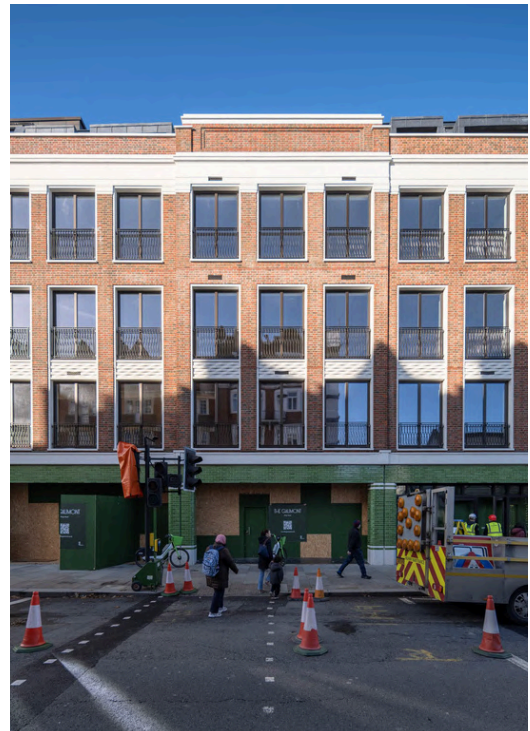
## PROJECT DETAILS

Contractor: Wates Construction

Architect: LDN Architects

Bricks: Hampshire Red Stock green & grey glazed, Peterson black glazed & Weinerberger Marziale

Details: 263 brick-facing panels.



# EDENICA, FETTER LANE, LONDON



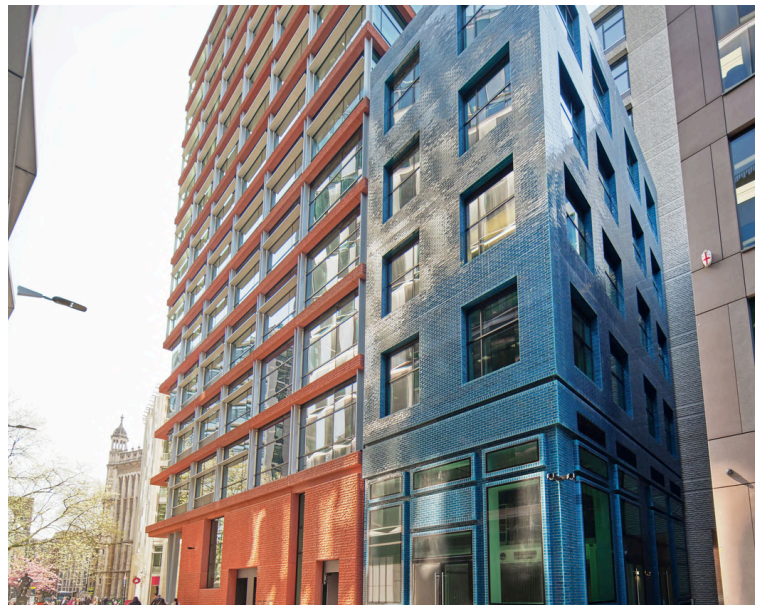
## PROJECT DETAILS

Contractor: Mace

Architect: Fletcher Priest

Bricks: Blue glazed bricks by  
Bespoke Brick Company.  
Glazed by H&E Smith.

Details:  
698 reconstructed stone &  
brick-facing panels.



WWW.TECHRETE.COM

# 1 KESIDEE SQUARE, KINGS CROSS



## PROJECT DETAILS

Contractor: BAM

Architect: AHMM

Bricks: Brown glazed bricks by Pyrolave Architecture

Details:  
178 reconstructed stone & brick-facing panels.



# CREED COURT, LUDGATE HILL



## PROJECT DETAILS

Contractor:  
Mace

Architect:  
Pilbrow & Partners

Bricks:  
Weinerberger

Details:  
1,381 brick-facing, terracotta-facing & reconstructed stone panels with punch windows.



# LANCER SQUARE, KENSINGTON



## PROJECT DETAILS

Contractor:  
Mace

Architect:  
Squire & Partners

Bricks:  
York Handmade

Details:  
469 brick-facing & natural  
stone-facing panels.



# ORCHARD WHARF, LONDON



## PROJECT DETAILS

Contractor:  
O'Shea's

Architect:  
BUJ Architects

Bricks:  
Ammonit

Details:  
928 brick-facing &  
reconstructed stone panels  
with punch windows.



# THE ROBINSON, WEMBLEY PARK



## PROJECT DETAILS

Contractor:  
John Sisk

Architect:  
PRP Architects

Bricks:  
Bespoke brick /Vande Moortel

Details:  
1,610 brick-facing &  
reconstructed stone panels  
with punch windows &  
Sapphire balconies.



# UCLH, CAMDEN



## PROJECT DETAILS

Contractor:  
Mace

Architect:  
Pilbrow & Partners

Bricks:  
Charnwood

Details:  
1,381 brick-facing &  
reconstructed stone panels  
with punch windows.



# i9 WOLVERHAMPTON EXCHANGE



## PROJECT DETAILS

Contractor:  
Graham Construction

Architect:  
Glenn Howells

Bricks:  
Ibstock

Details:  
239 brick-facing &  
reconstructed stone panels.



WWW.TECHRETE.COM

# COMMERCIAL ROAD, LONDON



## PROJECT DETAILS

Contractor:  
PCE

Architect:  
Dexter Moran

Bricks:  
Bespoke Bricks

Details:  
233 brick-facing &  
reconstructed stone sandwich  
panels.



WWW.TECHRETE.COM

# THE MARQ, DUKE'S COURT



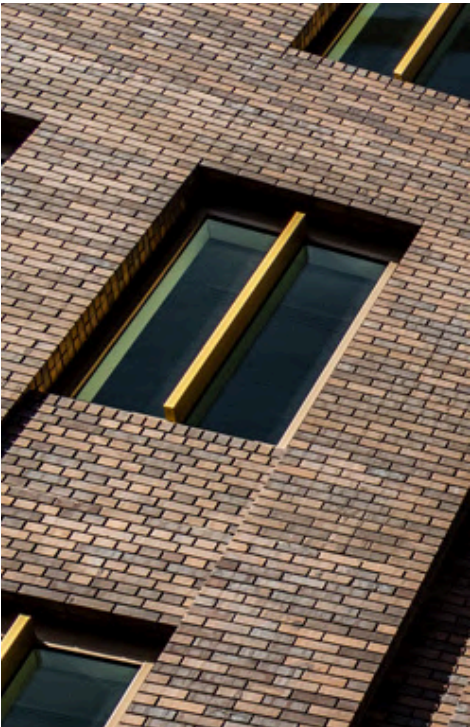
## PROJECT DETAILS

Contractor:  
Skanska

Architect:  
Rolfe Judd & John McAslan & Partners

Bricks:  
Strating / All About Bricks

Details:  
157 brick-facing, portland stone-facing & gold gilded panels.



# LONDON FRUIT & WOOL EXCHANGE



## PROJECT DETAILS

Contractor:  
Sir Robert McAlpine

Architect:  
Bennetts Associates

Bricks:  
Charnwood

Details:  
646 brick-facing &  
reconstructed stone panels.



WWW.TECHRETE.COM



WWW.TECHRETE.COM

# DURHAM UNIVERSITY, STUDENT ACCOMMODATION



## PROJECT DETAILS

Contractor:  
PCE

Architect:  
Willmore Iles

Bricks:  
Wienerberger / Edenhall

Details:  
15,000 brick facing and  
reconstructed stone panels.



# DAKOTA HOTEL, MANCHESTER



## PROJECT DETAILS

Contractor:  
McAleer Rushe

Architect:  
Simpson Haugh

Bricks:  
La Paloma

Details:  
398 brick-facing &  
reconstructed stone panels.



# BRAMALL SCHOOL OF MUSIC, BIRMINGHAM



## PROJECT DETAILS

Contractor:  
BAM

Architect:  
Glenn Howells

Bricks:  
Das Baksteen

Details:  
290 brick-facing & natural  
stone-facing panels.



WWW.TECHRETE.COM

# CAPITAL DOCK, DUBLIN



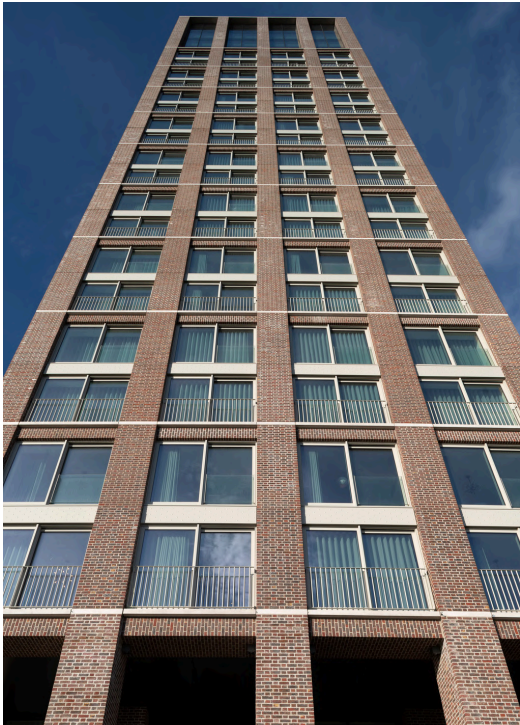
## PROJECT DETAILS

Contractor:  
John Sisk

Architect:  
OMP

Bricks:  
Ibstock

Details:  
1,105 brick-facing &  
reconstructed stone panels  
with punch windows.



# GRANGEGORMAN, DUBLIN



## PROJECT DETAILS

Contractor:  
Sisk / FCC JV

Architect:  
FCB Studios

Bricks:  
Engels

Details:  
611 brick-facing &  
reconstructed stone panels  
with punch windows.



# THE SIDINGS, DUBLIN

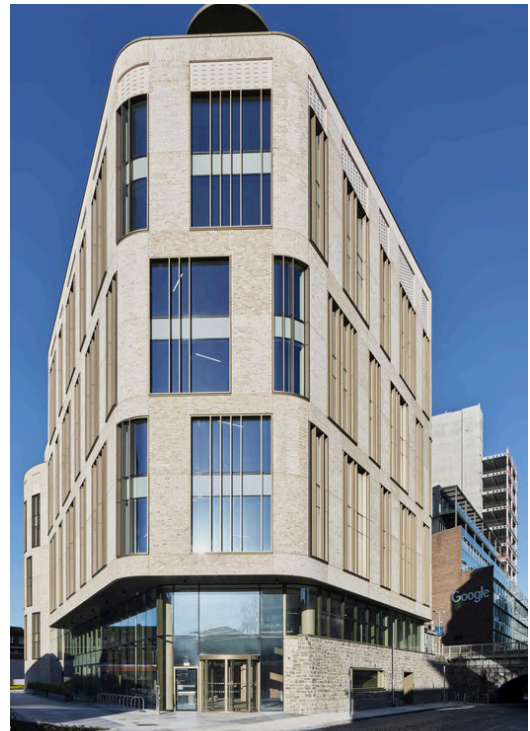
## PROJECT DETAILS

Contractor:  
Collen Construction

Architect:  
TOT Architects

Bricks:  
Weinerberger Marzial

Details:  
348 brick-facing panels.



# LEINSTER HOTEL, DUBLIN



## PROJECT DETAILS

Contractor:  
Dale Vision Ltd.

Architect:  
Henchion + Reuter Architects

Bricks:  
Weinerberger - Casan Lena,  
Golden Adante, St. Ives

Details:  
147 brick-facing panels.



WWW.TECHRETE.COM

# INTERNATIONAL RUGBY EXPERIENCE, LIMERICK



## PROJECT DETAILS

Contractor:  
Flynn Construction

Architect:  
Niall McLaughlin

Bricks:  
Charnwood

Details:  
474 brick-facing &  
reconstructed stone panels.



# ESB HQ, DUBLIN

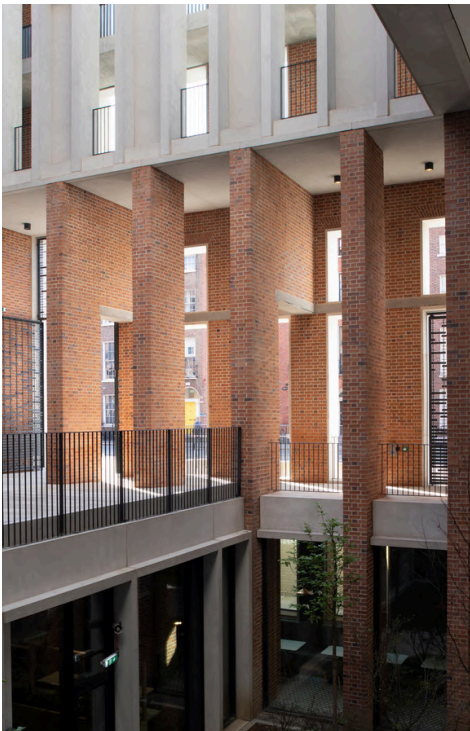
## PROJECT DETAILS

Contractor:  
PJ Hegarty

Architect:  
Grafton Architects

Bricks:  
Janinhoff

Details:  
2,234 brick-facing &  
reconstructed stone panels.



# 10 MOLESWORTH ST, DUBLIN

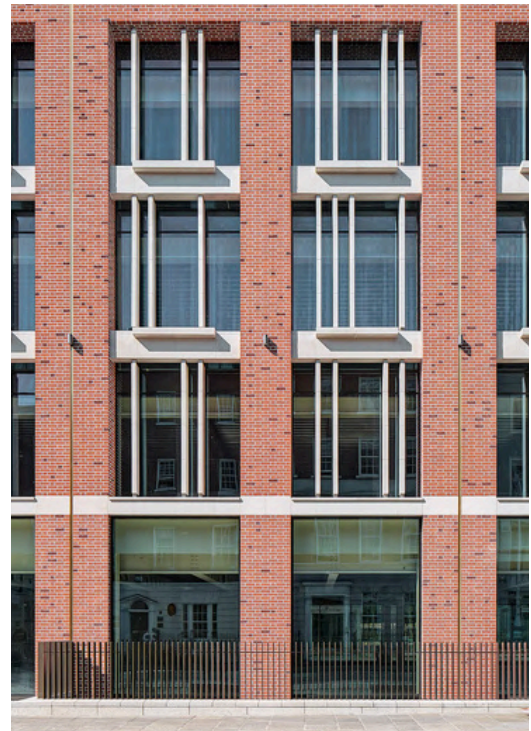
## PROJECT DETAILS

Contractor:  
PJ Hegarty

Architect:  
Henry J Lyons

Bricks:  
Coleford

Details:  
262 brick-facing, natural stone  
& reconstructed stone panels.



# DUBLIN LANDINGS

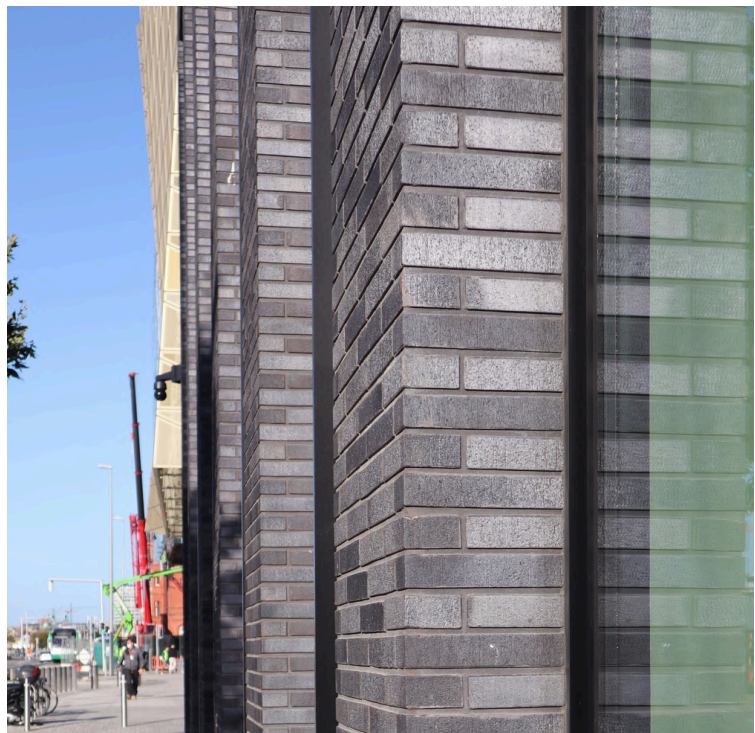
## PROJECT DETAILS

Contractor:  
Walls

Architect:  
ARROW & RKD

Bricks:  
Gima

Details:  
407 brick-facing &  
reconstructed stone panels.



# HAYMARKET HOUSE, DUBLIN



## PROJECT DETAILS

Contractor:  
Collen Construction

Architect:  
Reddy Architecutre

Bricks:  
TBC

Details:  
129 brick-facing panels.



# ATHLETE'S VILLAGE, NO. 7, STRATFORD



## PROJECT DETAILS

Contractor:  
Lendlease

Architect:  
Glenn Howells & Panter  
Hudspith

Bricks:  
lbstock

Details:  
1,438 brick-facing &  
reconstructed stone panels.



# FITZROY PLACE, FITZROVIA



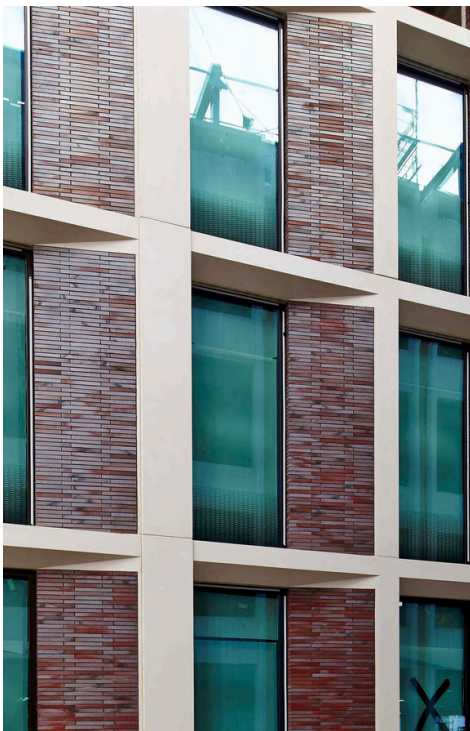
## PROJECT DETAILS

Contractor:  
Sir Robert McAlpine

Architect:  
Sheppard Robson

Bricks:  
Janinhof

Details:  
1,187 brick-faced and natural  
stone-faced panels.



# PLOUGH PLACE, HOLBORN

## PROJECT DETAILS

Contractor:  
Mowlem

Architect:  
Hamilton & Associates

Details:  
150 brick-facing &  
reconstructed stone panels  
with punch windows.



# JERMYN ST, WESTMINSTER



## PROJECT DETAILS

Contractor:  
John Sisk

Architect:  
Frederick Gibberd Architects

Bricks:  
Ibstock

Details:  
100 brick-faced & natural  
stone-faced panels.



# BARTON SQUARE, MANCHESTER



## PROJECT DETAILS

Contractor:  
Lendlease

Architect:  
Leach Rhodes

Bricks:  
Hanson

Details:  
470 brick-faced &  
reconstructed panels.



# COLLEGELANDS, GLASGOW



## PROJECT DETAILS

Contractor:  
Dawn Construction

Architect:  
Page Park Architects

Bricks:  
Ibstock

Details:  
750 brick-facing &  
reconstructed stone panels.



WWW.TECHRETE.COM

# GRIFFITH COLLEGE, DUBLIN



## PROJECT DETAILS

Contractor:  
PJ Hegarty

Architect:  
Aidan Powell & Associates

Details:  
550 brick-facing &  
reconstructed stone panels.



# DURHAM UNIVERSITY STUDENT ACCOMMODATION, BLOCK D



## PROJECT DETAILS

Contractor:  
PCE

Architect:  
Willmore Iles Architects

Mix & Finish:  
C155 B8000 LGB

Details:  
626 reconstructed stone panels  
in a brick look-a-like finish.



# ANGEL MEADOWS, MANCHESTER



## PROJECT DETAILS

Contractor:  
Westfields

Architect:  
Jon Matthews

Mix & Finish:  
C413 B6000 P

Details:  
96 reconstructed stone panels  
with a polished brick look-a-  
like finish.



# HOLYROOD SOUTH, EDINBURGH



## PROJECT DETAILS

Contractor:  
Balfour Beatty

Architect:  
Richard Murphy Architects

Mix & Finish:  
C190 PT500 AE

Details:  
136 reconstructed stone panels in a brick look-a-like finish, with punch windows.



# BENEFITS OF BRICK-FACING PANELS



## Reduced Cost

Can be manufactured in large sizes; typically grid width x storey-height, impacting positively on cost & speed of enclosure, approximately 10 times less than hand-set brickwork.

## Greater Lettable Area

Compared with conventional brick cavity walls, brick-faced precast concrete can offer a reduced overall cladding zone, resulting in a greater net lettable area.

## Reduced Onsite Trades

Pre-casting offers the designer more scope in that anti-gravity features can be pre-moulded, negating the need for cumbersome secondary support on site.

## No Site Cutting

Complex features such as brick-facing arches can be manufactured, negating the need for centres & site cutting and fitting.

## No Scaffolding

High-rise buildings can benefit from having a traditional appearance without the use of scaffolding.

## Reduction in Waste

Reduction in number of site movements and a tidier, safer site environment., with a reduction in waste.

## Design Flexibility

Windows, doors & other features can be incorporated into brick-facing units & multiple materials & finishes can be achieved within a single panel.

## Low Maintenance

Brick-facing panels can be pre-insulated & offer low maintenance & life cycle costs.

## Greater Quality

Accurate, off-site manufactured components & greater quality control.

