



Building Sustainable Futures

---

# > COMPANY INTRODUCTION

## > COMPANY OVERVIEW



**375** Employees in the UK & Ireland



**700+** Projects in **41** Years



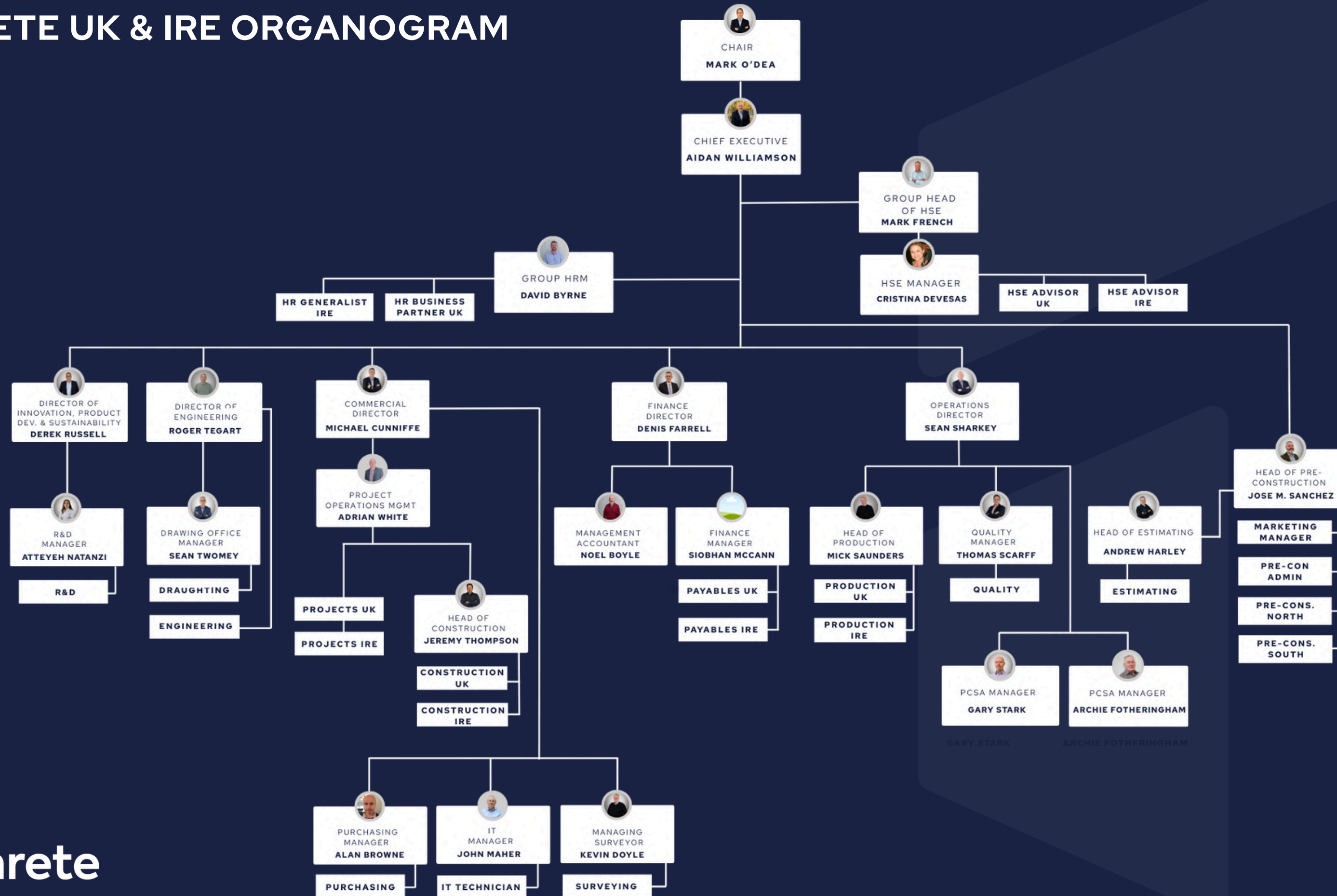
Class-Leading In-House **Design** Capability



**2** Advanced Manufacturing Facilities









# TECHRETE UK & IRE ORGANOGRAM



# > OUR FACILITIES - BRIGG







## Manufacturing Facilities

	Window fitting area.
	Brick-cutting facility.
	Casting & curing carried out in a controlled indoor environment
	Computerised batching plant & bar bending equipment.
	Enclosed acid etching building with effluent neutralisation.
	First carousel in the UK for architectural cladding, with 37 steel tilting tables.



# > OUR FACILITIES - DUBLIN

## Manufacturing Facilities

	Window fitting area.
	Automated polishing plant.
	Casting & curing carried out in a controlled indoor environment.
	Computerised batching plant & bar bending equipment.
	Enclosed acid etching building with effluent neutralisation.
	Two gantry cranes servicing our yard storage.



# > PROJECT PORTFOLIO

## MARYLEBONE HOUSE

**Contractor:** Blenheim House Construction | **Architect:** Fletcher Priest Architects

**Type & Finish:** Brick-facing reconstructed stone panels, double-storey arch panels, perforated brick patterns, brick stitch detailing to hide joints. 7 types of brick.

**Project in Numbers:** 84 panels, covering 1,280 sqm.

### Site Timeline:

The main installation works began in October 2022 with all works completing by January 2023.

[LEARN MORE](#)



## > PROJECT PORTFOLIO

### THE ISLAND, JOHN DALTON ST.

**Contractor:** Bowmer & Kirkland | **Architect:** Cartwright Pickard

---

**Type & Finish:** Brick-facing punch window panels.

**Project in Numbers:** 270 panels, covering 2,948 sqm.

---

#### Site Timeline:

The main installation works began in November 2023, with works completing by September 2024.

---

LEARN MORE 



## > PROJECT PORTFOLIO

### V&A EAST, EAST BANK

**Contractor:** Mace / LLDC | **Architect:** O'Donnell & Tuomey

---

**Type & Finish:** Reconstructed stone, acid etched finish.

**Project in Numbers:** 474 panels, covering 15,878 sqm.

---

#### Site Timeline:

The main installation works began in May 2021, with all works completing by August 2022.

---

LEARN MORE 



## > PROJECT PORTFOLIO

# UAL COLLEGE OF FASHION, EAST BANK

**Contractor:** Mace / LLDC | **Architect:** Allies and Morrison

---

**Type & Finish:** Reconstructed stone, scalloped shaped, grit blasted finish.

**Project in Numbers:** 900 panels, covering 11,323 sqm.

---

### Site Timeline:

The main installation works began in April 2021, with all works completing by February 2022.

---

LEARN MORE 



## > PROJECT PORTFOLIO

### BBC MUSIC STUDIOS, EAST BANK

**Contractor:** Mace / LLDC | **Architect:** Allies and Morrison

---

**Type & Finish:** Reconstructed stone, grit blasted and polished finishes.

**Project in Numbers:** 117 panels, covering 2,550 sqm.

---

#### Site Timeline:

The main installation works began in September 2021, with works substantially completing by completing by June 2022.

---

LEARN MORE 



## > PROJECT PORTFOLIO

# PAUL MARSHALL INSTITUTE, LSE

**Contractor:** Mace | **Architect:** Grafton Architects

---

**Type & Finish:** Reconstructed stone, grit blasted.

**Project in Numbers:** 1,170 panels, covering 12,124 sqm.

---

### Site Timeline:

The main installation works began in November 2019, with works completing by July 2021.

---

LEARN MORE 



# > PROJECT PORTFOLIO

## BBC, EAST BANK

**Contractor:** Mace | **Architect:** Sheppard Robson & Stanton Williams

---

**Type & Finish:** Reconstructed stone, bush hammered finish

**Project in Numbers:** 795 panels, covering 16,360 sqm.

---

### Site Timeline:

The main installation works began in February 2021, with all works completing by April 2022.

---

[LEARN MORE](#)



# > PROJECT PORTFOLIO

## POOL ST WEST, UCL EAST

**Contractor:** Vinci Construction | **Architect:** Lifschutz Davidson Sandilands

---

**Type & Finish:** Reconstructed stone, acid etched & grit blasted.

**Project in Numbers:** 795 panels, covering 16,360 sqm.

---

### Site Timeline:

The main installation works began in November 2020, with works completing by December 2021.

---

LEARN MORE 



## > PROJECT PORTFOLIO

# ONE LINEAR PLACE, NINE ELMS

**Contractor:** London Square | **Architect:** Architectus

---

**Type & Finish:** Reconstructed stone panels, punch windows, 3-storey high units.

**Project in Numbers:** 427 panels, covering 15,040 sqm.

---

### Site Timeline:

The main installation works began in June 2023 with all works completed by August 2024.

---

LEARN MORE 



# > PROJECT PORTFOLIO

## 101 MOORGATE, CITY OF LONDON

**Contractor:** Mace | **Architect:** Orms

---

**Type & Finish:** Brick-facing and reconstructed stone panels, acid etched and polished finish.

**Project in Numbers:** 250 panels, covering 4,732 sqm.

---

### Site Timeline:

The main installation works began in October 2023 with all works completing by April 2024.

---

LEARN MORE 



## > PROJECT PORTFOLIO

# OSIERS ROAD, WANDSWORTH

**Contractor:** Hollybrook | **Architect:** Burwell / Rolfe Judd

---

**Type & Finish:** Brick-facing & reconstructed stone, acid etched & polished.

**Project in Numbers:** 773 panels, covering 9,916 sqm.

---

### Site Timeline:

The main installation works began in August 2021, with works completing by February 2022.

---

LEARN MORE 



# > PROJECT PORTFOLIO

## NEO2 & NEO3 WEMBLEY PARK

**Contractor:** John Sisk & Son | **Architect:** Haworth Tompkins

---

**Type & Finish:** Red and grey reconstructed stone, ribbed, fluted, acid etched and grit blasted finishes.

**Project in Numbers:** 1,793 panels, covering 29,100 sqm over 6 blocks and podiums.

---

### Site Timeline:

The main installation works began in April 2023, with works completed in March 2024.

---

[LEARN MORE](#)



# > PROJECT PORTFOLIO

## EDENICA, 100 FETTER LANE

**Contractor:** Mace | **Architect:** Fletcher Priest Architects

---

**Type & Finish:** Glazed brick-facing reconstructed stone panels and reconstructed stone panels.

**Project in Numbers:** 698 panels covering 3,390 sqm.

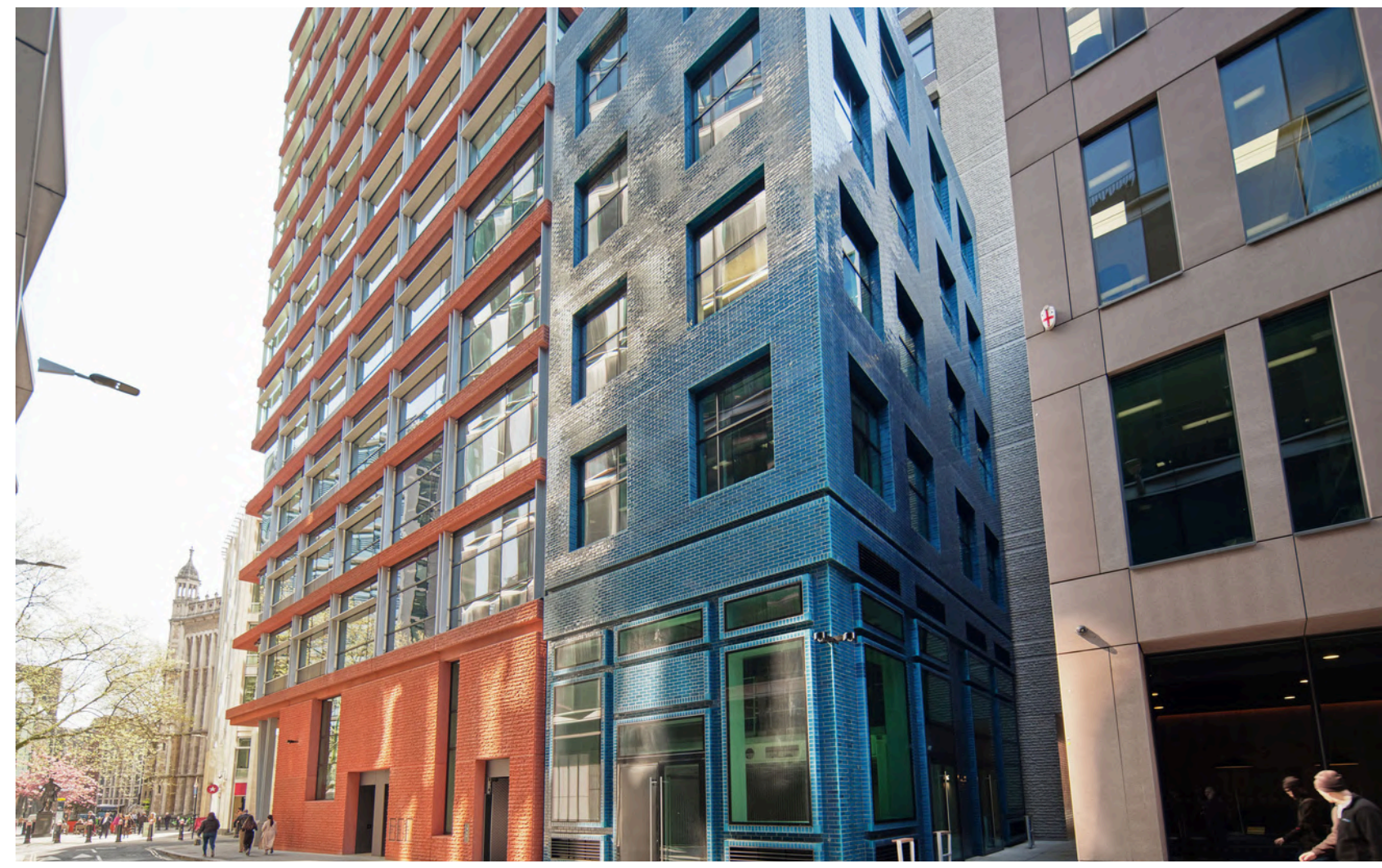
---

### Site Timeline:

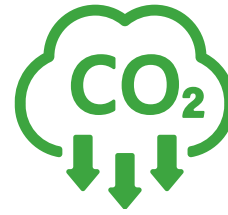
The main installation works began in February 2024, with all works completing by September 2024.

---

[LEARN MORE](#)



# > PROJECT PORTFOLIO



## STOKE GOODS YARD

**Contractor:** Bowmer & Kirkland | **Architect:** Glenn Howells Architects

**Type & Finish:** Red reconstructed stone, scalloped and ribbed, acid etched

**Project in Numbers:** 360 panels, covering 6,200 sqm.

**Carbon Saving:** Low carbon mix of 490Kg CO<sub>2</sub>/M<sup>3</sup>eq, saving **87,324kg CO<sub>2</sub>**.

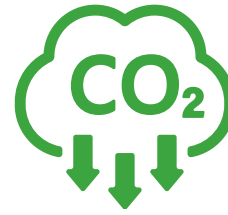
### Site Timeline:

The main installation works began in November 2023, with works completing by April 2024.

[LEARN MORE](#)



## > PROJECT PORTFOLIO



# CAVENDISH BUILDING - DERBY BUSINESS SCHOOL

**Contractor:** Kier Construction | **Architect:** CPMG Architects & Stride Treglown

**Type & Finish:** Low carbon red mix, reconstructed stone wall and window panels. Finish was acid etched & ex-mould.

**Project in Numbers:** 173 panels, covering 2,272 sqm.

**Carbon Saving:** Low carbon mix of 419 Kg CO<sub>2</sub>/M<sup>3</sup>eq, saving **130,380kg CO<sub>2</sub>**.

### Site Timeline:

The main installation works began in October 2022 with all works completing by January 2023

LEARN MORE 



# > PROJECT PORTFOLIO

## 9a FIRST STREET

**Contractor:** BAM | **Architect:** Jon Matthews

---

**Type & Finish:** Green reconstructed stone, acid etched, weave pattern.

**Project in Numbers:** 335 panels, covering 6,376 sqm.

---

### Site Timeline:

The main installation works began in September 2023, with final works completing in December 2024.

---

[LEARN MORE](#)



## > PROJECT PORTFOLIO

# UNIVERSITY TECHNICAL COLLEGE, LEEDS

**Contractor:** McAleer & Rushe | **Architect:** DLA Architecture

---

**Type & Finish:** Reconstructed stone panels with punch windows, acid etched finish.

**Project in Numbers:** 745 panels, covering 7,318 sqm.

---

### Site Timeline:

The main installation works began in November 2022 with all works completing by March 2024

---

LEARN MORE 



## > PROJECT PORTFOLIO

# THE SILVER YARD, EXCHANGE SQ, BIRMINGHAM

**Contractor:** McAleer & Rushe | **Architect:** Stephenson Hamilton Risley Studios

---

**Type & Finish:** Reconstructed stone panels, reckli mould and acid etched finish.

**Project in Numbers:** 600 panels, covering 14,000 sqm.

---

### Site Timeline:

The main installation works began in November 2021 with all works completing by October 2023.

---

LEARN MORE 



## > PROJECT PORTFOLIO

# GASCOIGNE ESTATE, BARKING

**Contractor:** Wates Construction | **Architect:** White Arkitekter

---

**Type & Finish:** Brick-facing and reconstructed stone panels.

**Project in Numbers:** 5 blocks, 1,326 panels, covering 21,455 sqm.

---

### Site Timeline:

The main installation works began in April 2022 with all works completing by December 2023.

---

LEARN MORE 



## > PROJECT PORTFOLIO

# DUNCAN HOUSE, STRATFORD

**Contractor:** Watkin Jones | **Architect:** Hodder & Partners

---

**Type & Finish:** Reconstructed stone, acid etched.

**Project in Numbers:** 1,487 panels, covering 18,500 sqm.

---

### Site Timeline:

The main installation works began in September 2017, with works completing by March 2019.

---

LEARN MORE 



## > PROJECT PORTFOLIO

### KINGS CROSS, R8

**Contractor:** McLaren Construction | **Architect:** Piercy & Company

**Type & Finish:** Reconstructed stone panels in a grit blasted finish

**Project in Numbers:** 188 panels, covering 1,803 sqm.

#### Site Timeline:

The main installation works began in April 2022 with all works completing by September 2022.

LEARN MORE 



## > PROJECT PORTFOLIO

### 10 THE BROADWAY, WESTMINSTER

**Contractor:** Multiplex | **Architect:** Squire & Partners

---

**Type & Finish:** Reconstructed stone & GRC, acid etched & grit blasted finish.

**Project in Numbers:** 1,311 panels, covering 13,431 sqm.

---

#### Site Timeline:

The main installation works began in November 2019 with works completing by February 2021.

---

LEARN MORE 



# > PROJECT PORTFOLIO

## CLARE COUNTY LIBRARY

**Contractor:** Coolsivna Construction | **Architect:** Keith Williams

---

**Type & Finish:** Reconstructed stone panels, curved & ribbed with acid etched & polished finishes.

**Project in Numbers:** 82 panels, covering 1,291 sqm.

---

### Site Timeline:

The main installation works began in January 2023 with all works completing by April 2023.

---

[LEARN MORE](#)



# > PROJECT PORTFOLIO

## LEINSTER HOTEL, MOUNT STREET

**Contractor:** Dale Vision | **Architect:** Henchion + Reuter Architects

---

**Type & Finish:** Reconstructed stone and brick-facing panels with a slurry render over the brick.

**Project in Numbers:** 147 panels, covering 1,500sqm.

---

### Site Timeline:

The main installation works began in February 2022 with all works completing by May 2022.

---

[LEARN MORE](#)



## > PROJECT PORTFOLIO

### GLENCAR HOUSE, DUBLIN

**Contractor:** Walls | **Architect:** Reddy Architecture + Urbanism

**Type & Finish:** Reconstructed stone panels, acid etched & polished.

**Project in Numbers:** 242 panels, covering 3,700 sqm.

#### Site Timeline:

The main installation works began in September 2021 with works completing onsite by March 2023.

LEARN MORE 



# > PROJECT PORTFOLIO

## THE SIDINGS

**Contractor:** Colleen Construction | **Architect:** TOT Architects

---

**Type & Finish:** Brick-facing reconstructed stone panels

**Project in Numbers:** 348 panels, covering 4,800 sqm.

---

### Site Timeline:

The main installation works began in June 2023, with works completing by December 2023.

[LEARN MORE](#)



## > OUR MATURE STRATEGY

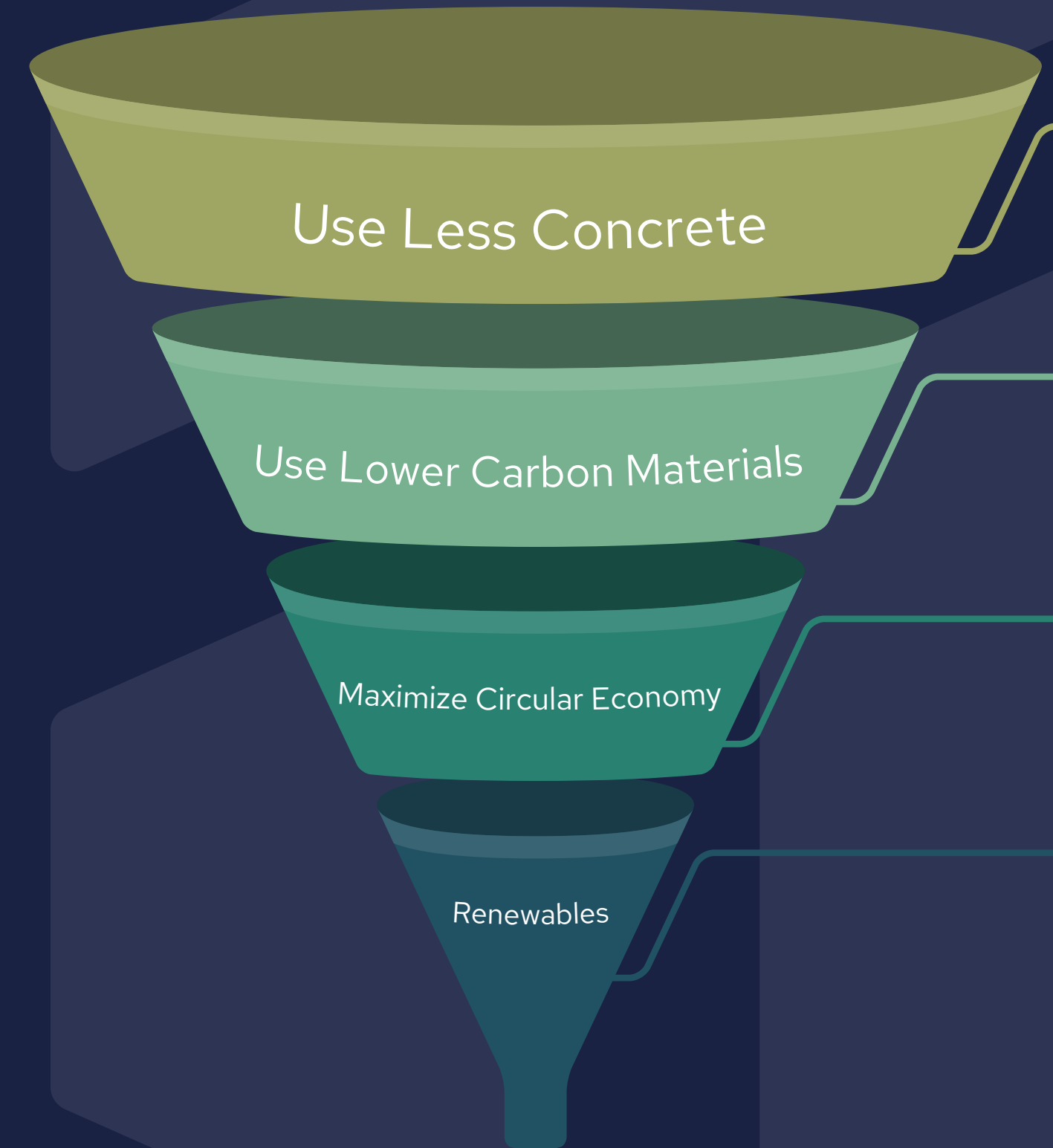
### Remains On Track

#### Core strategy :

- ✓ Reduce **volume** of concrete
- ✓ Reduce **carbon load** of binders

#### But also :

- ✓ Reduce **waste** : primarily concrete
- ✓ Reduce **energy** : gas and electricity
- ✓ Conserve **water**



# OUTCOMES OF LOW CARBON INITIATIVES

## Renewable Energy

- ✓ Solar arrays doubled & generating 357,000 kWh's combined : generating up to **50%** of our energy needs, saving **141,800kg Co<sub>2</sub>** annually.
- ✓ Ground source heat pump providing thermal energy for our Dublin office.

## Water Conservation & Processing

- ✓ Two 350ft deep water wells, each capable of supplying 3m<sup>3</sup> of water per hour to Dublin factory, to provide **100%** of our water needs.
- ✓ Rainwater collection systems feed water to our storage ponds for use in manufacturing.
- ✓ Stringent management & processing of water - neutralised & solid particles removed, prior to discharge.

## Waste Management

- ✓ Material usage optimisation to reduce volume of waste & use of steel moulds to reduce timber usage.
- ✓ Recycling plant (Eco Frog) & programmes to reduce the volume of waste sent to landfill.



## > 5 THIRD-PARTY VERIFIED EPDS

The panels produced in our plants are categorized into 5 different types based on the mix designs, casting processes & surface finishes :



**White Cement Based :**

**83 kgCO<sub>2</sub>/m<sup>2</sup>**



**Grey Cement Based :**

**54.8 kgCO<sub>2</sub>/m<sup>2</sup>**



**Brick-Facing :**

**75.4 kgCO<sub>2</sub>/m<sup>2</sup>**



**Stone facing :**

**67.1 kgCO<sub>2</sub>/m<sup>2</sup>**



**Sandwich :**

**127 kgCO<sub>2</sub>/m<sup>2</sup>**

# APPLICATION OF REVISED BS8500

## Carbon Savings on Current Projects :

✓ Castleforbes : 246.5t

✓ Fulton road : 214.2t

✓ Brent Cross : 90.0t

✓ Aleph : 164.0t

## Total savings realised to date : 714.7t - equating to :

✈ 650 → One way flights from London to New York

🐮 511 → People's yearly consumption of meat & dairy on avg.

🚗 275 → Avg. family cars running for 1 year



Project Aleph

# > CERTIFICATIONS



ENERGY  
ISO 50001:2018  
NSAI Certified

> ISO 50001 - ENERGY



ENVIRONMENT  
ISO 14001:2015  
NSAI Certified

> ISO 14001 - ENVIRONMENT



QUALITY  
ISO 9001:2015  
NSAI Certified

> ISO 9001 - QUALITY



HEALTH  
& SAFETY  
ISO 45001:2018  
NSAI Certified

> ISO 45001 - H&S



READY-MIX  
CONCRETE  
I.S.EN 206:2013  
NSAI Certified

> IS EN 206 - CONCRETE



> SUSTAINABILITY CHARTER



> HEALTH & SAFETY



> HIGHEST RATING



> ADVANCED MEMBER



> AEO AUTHORISED

