

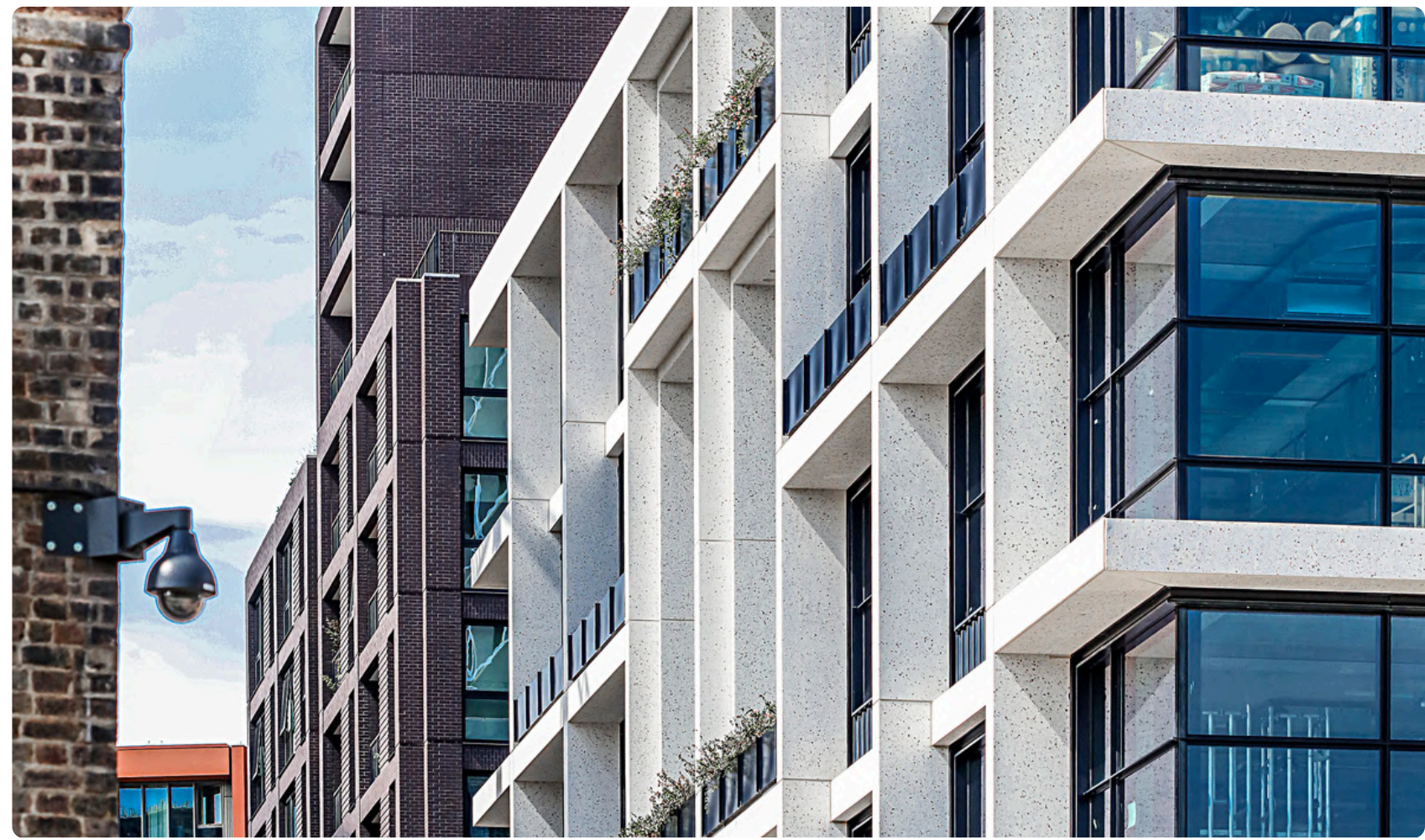


POLISHED PRECAST CONCRETE

> POLISHED PRECAST CONCRETE

Why choose a polished finish? :

- ✔ Polishing exposes the beauty of the natural aggregates within the panel.
- ✔ Automated polishers ensure a smooth, uniform appearance.
- ✔ The polishing process seals the face of the panel and sheds water and dirt particles easily.
- ✔ Minimal maintenance is required.
- ✔ Can be used in conjunction with other finishes within one panel, for example, acid etching, or grit blasting.



POLISHED FINISHES



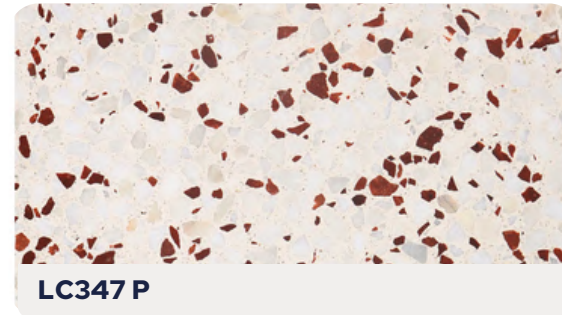
LC195 P



LC399 P



LC341 P



LC347 P



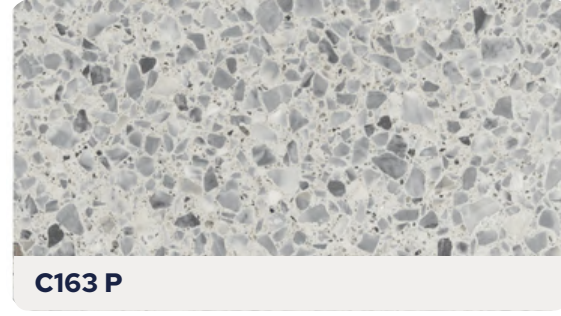
LC328 P



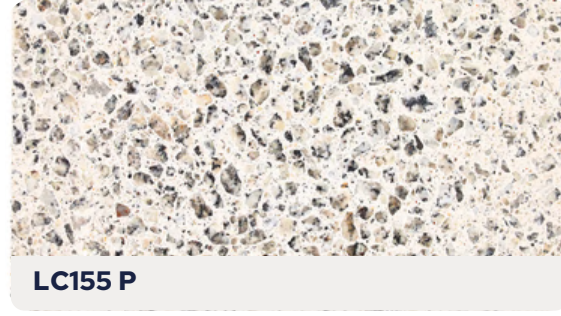
LC328 PT1000 P



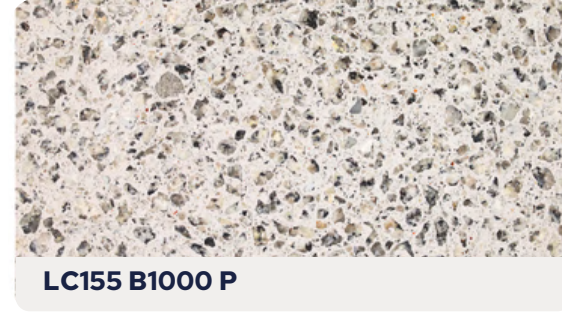
C335 P



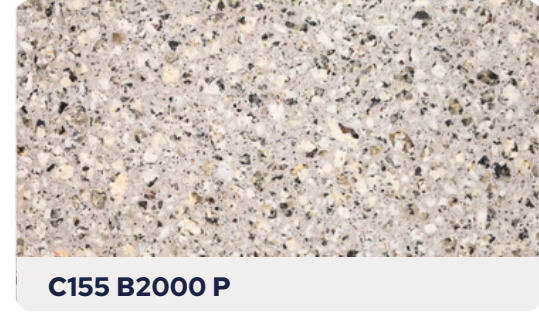
C163 P



LC155 P



LC155 B1000 P



C155 B2000 P



C155 B4000 P



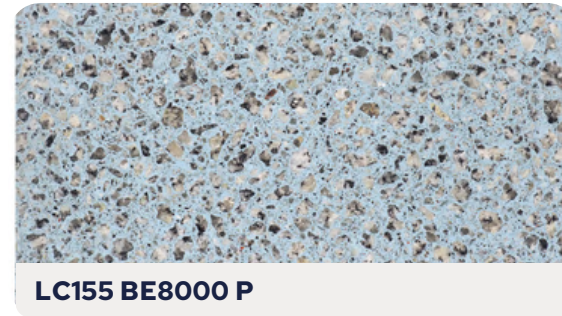
LC155 B8000 P



LC155 BE2000 P



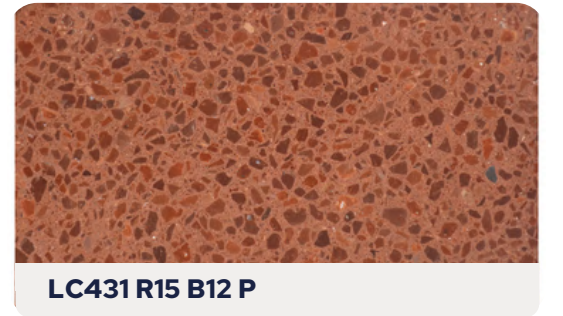
LC155 BE4000 P



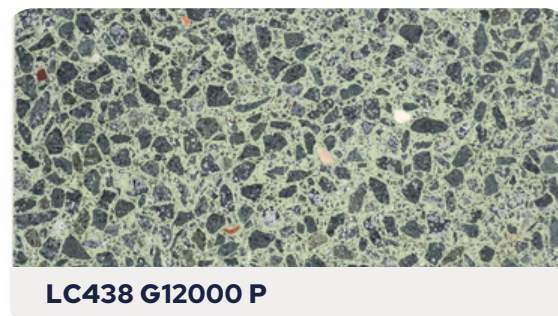
LC155 BE8000 P



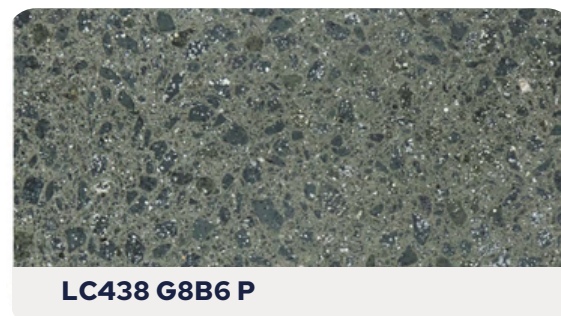
LC288 BN2000 P



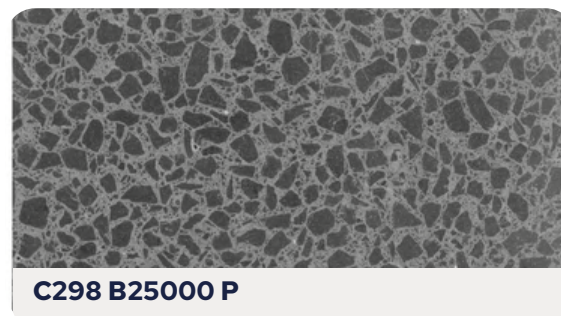
LC431 R15 B12 P



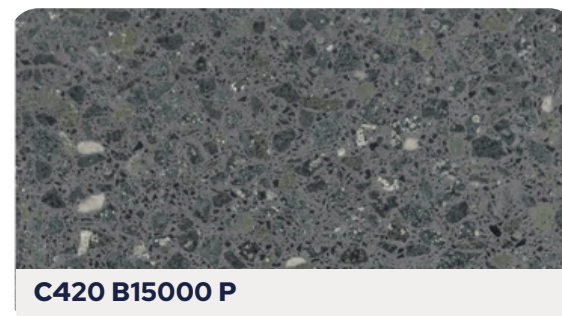
LC438 G12000 P



LC438 G8B6 P



C298 B25000 P



C420 B15000 P



LC298 B25000 P

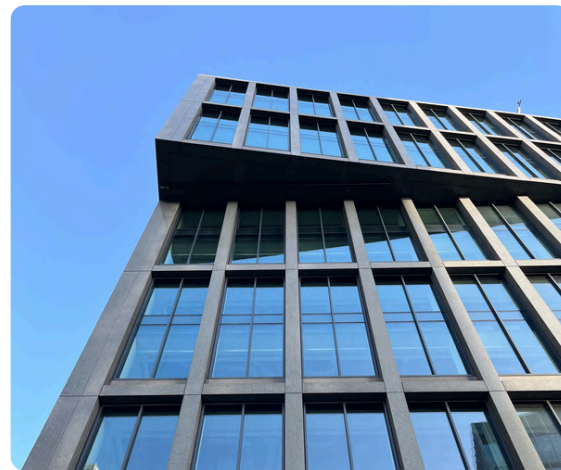
> POLISHED PROJECTS

4 ANGEL SQUARE, NOMA, MANCHESTER

Contractor: Bowmer & Kirkland | **Architect:** SimpsonHaugh

Type & Finish: Green reconstructed stone, acid etched & polished finish.

Project in Numbers: 602 panels, covering 4,806 sqm.



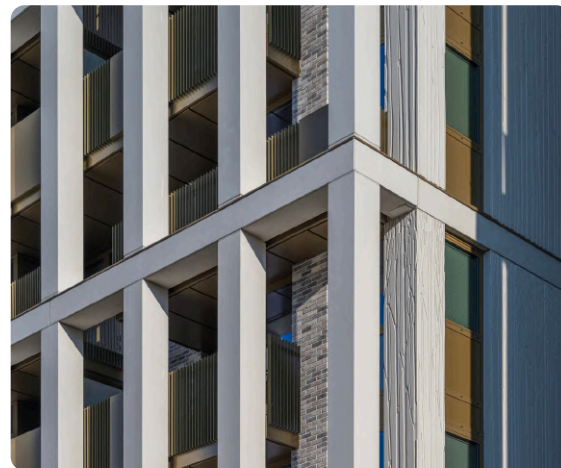
> POLISHED PROJECTS

GRACE HOUSE, LONDON

Contractor: PCE | **Architect:** Ryder Architecture

Type & Finish: Green reconstructed stone, acid etched & polished finish.

Project in Numbers: 1,025 panels, covering 7,675 sqm.



> POLISHED PROJECTS

TOTTENHAM COURT ROAD, LONDON

Contractor: Galliard Construction | **Architect:** Hawkins Brown

Type & Finish: Black reconstructed stone with a polished finish.

Project in Numbers: 243 panels, covering 1,946 sqm.



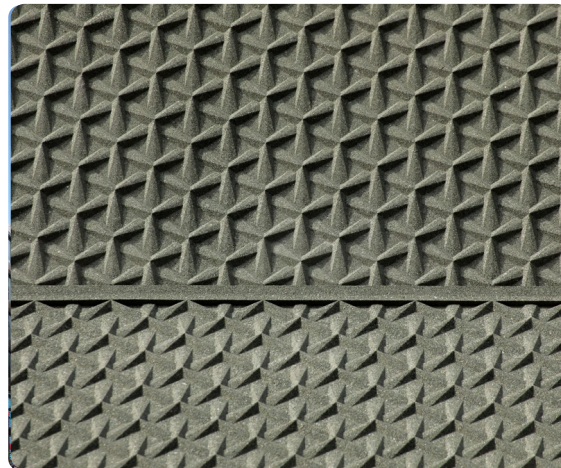
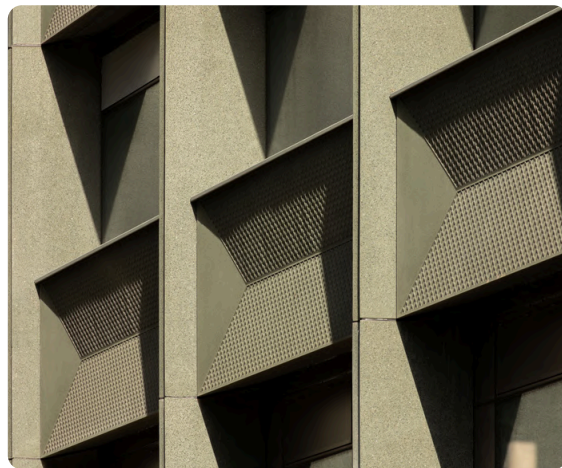
> POLISHED PROJECTS

FIRST STREET, MANCHESTER

Contractor: Bam | **Architect:** Jon Matthews

Type & Finish: Reconstructed stone, polished and acid etched.

Project in Numbers: 335 panels, covering 6,376 sqm.



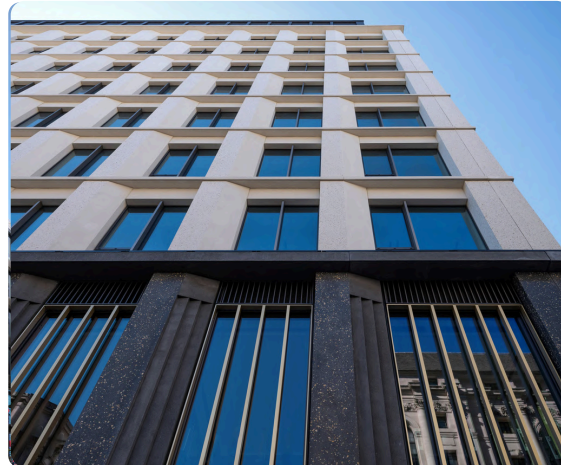
> POLISHED PROJECTS

101 MOORGATE, CITY OF LONDON

Contractor: Mace | **Architect:** Orms

Type & Finish: Reconstructed stone and brick-facing panels with a polished and acid etched finish.

Project in Numbers: 250 panels, covering 4,732 sqm.



> POLISHED PROJECTS

G3, WOOD WHARF, LONDON

Contractor: Canary Wharf | **Architect:** Allies and Morrison

Type & Finish: Reconstructed stone panels with a polished finish.

Project in Numbers: 307 panels, covering 3,857 sqm.



> POLISHED PROJECTS

BETTYSTOWN LIBRARY, CO. MEATH

Contractor: Cunmore Construction | **Architect:** Robin Lee Architecture

Type & Finish: Reconstructed stone panels with a polished finish.

Project in Numbers: 208 panels, covering 1,464 sqm.



> POLISHED PROJECTS

CLARE LIBRARY, CO. CLARE

Contractor: Coolsivna Construction | **Architect:** Keith Williams Architecture

Type & Finish: Reconstructed stone panels with a polished finish.

Project in Numbers: 82 panels, covering 1,291 sqm.



> POLISHED PROJECTS

CLONES LIBRARY, MONAGHAN

Contractor: P. Elliot | **Architect:** Keith Williams Architects

Type & Finish: Reconstructed stone with a polished finish.

Project in Numbers: 98 panels, covering 1,260 sqm.



> POLISHED PROJECTS

DUBLIN CITY COUNCIL, NORTH DEPOT

Contractor: Purcell Construction | **Architect:** JNP Architects

Type & Finish: Reconstructed stone wall panels, with a polished finish and diagonal detailing.

Project in Numbers: 154 panels, covering 2,000 sqm.



> POLISHED PROJECTS

LOCAL BLACKFRIARS, MANCHESTER

Contractor: Domis Construction | **Architect:** Jon Matthews Architects

Type & Finish: Terracotta-faced & reconstructed stone, acid etched & polished finish.

Project in Numbers: 484 panels, covering 5,574 sqm.



> POLISHED PROJECTS

P2, KINGS CROSS

Contractor: Kier / Argent | **Architect:** AHMM

Type & Finish: Reconstructed stone panels, polished and grit blasted.

Project in Numbers: 1,023 panels, covering 9,715 sqm.



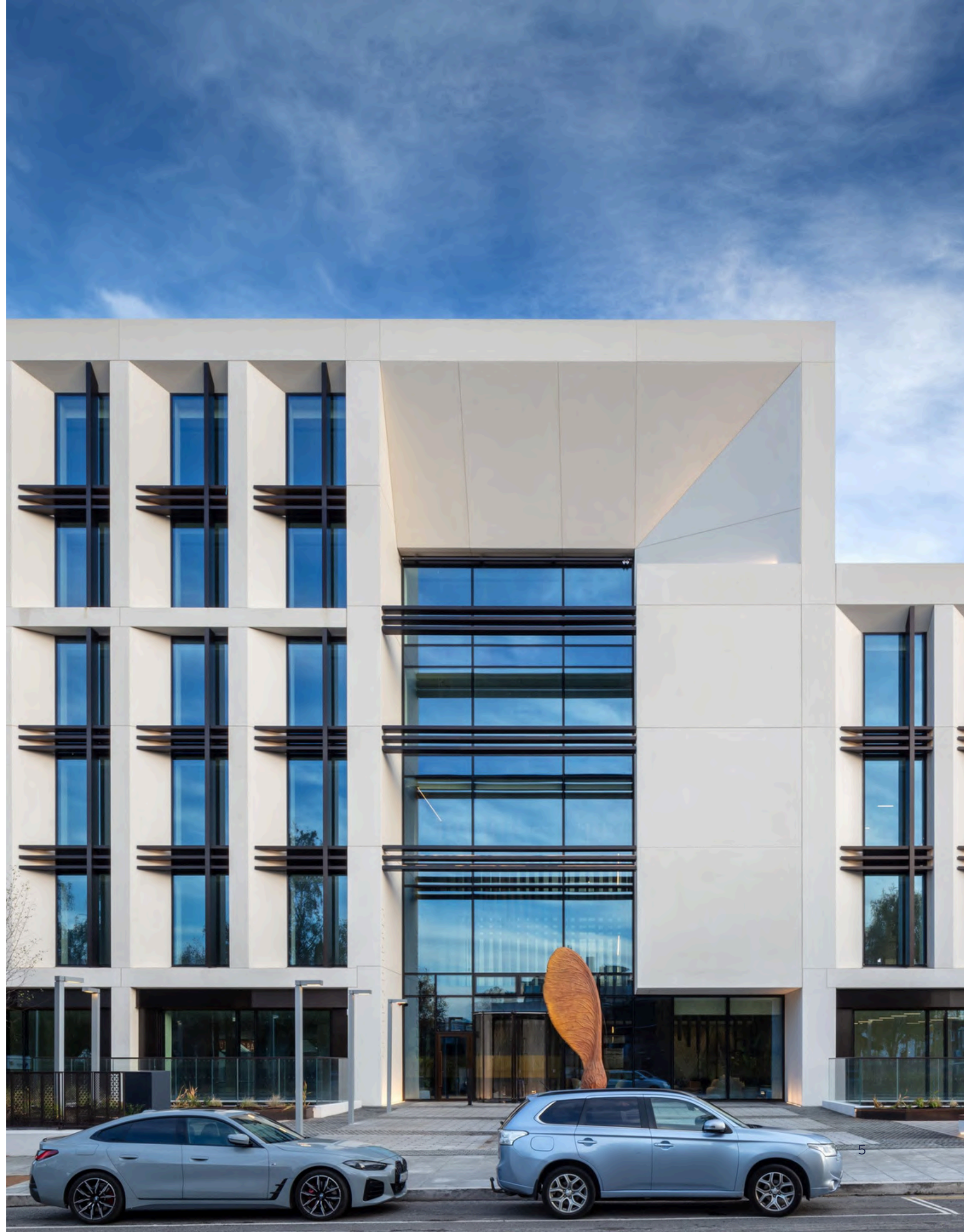
> POLISHED PROJECTS

GLENCAR HOUSE, DUBLIN

Contractor: Walls | **Architect:** Reddy Architecture

Type & Finish: Reconstructed stone panels, polished and acid etched.

Project in Numbers: 242 panels, covering 3,700 sqm.



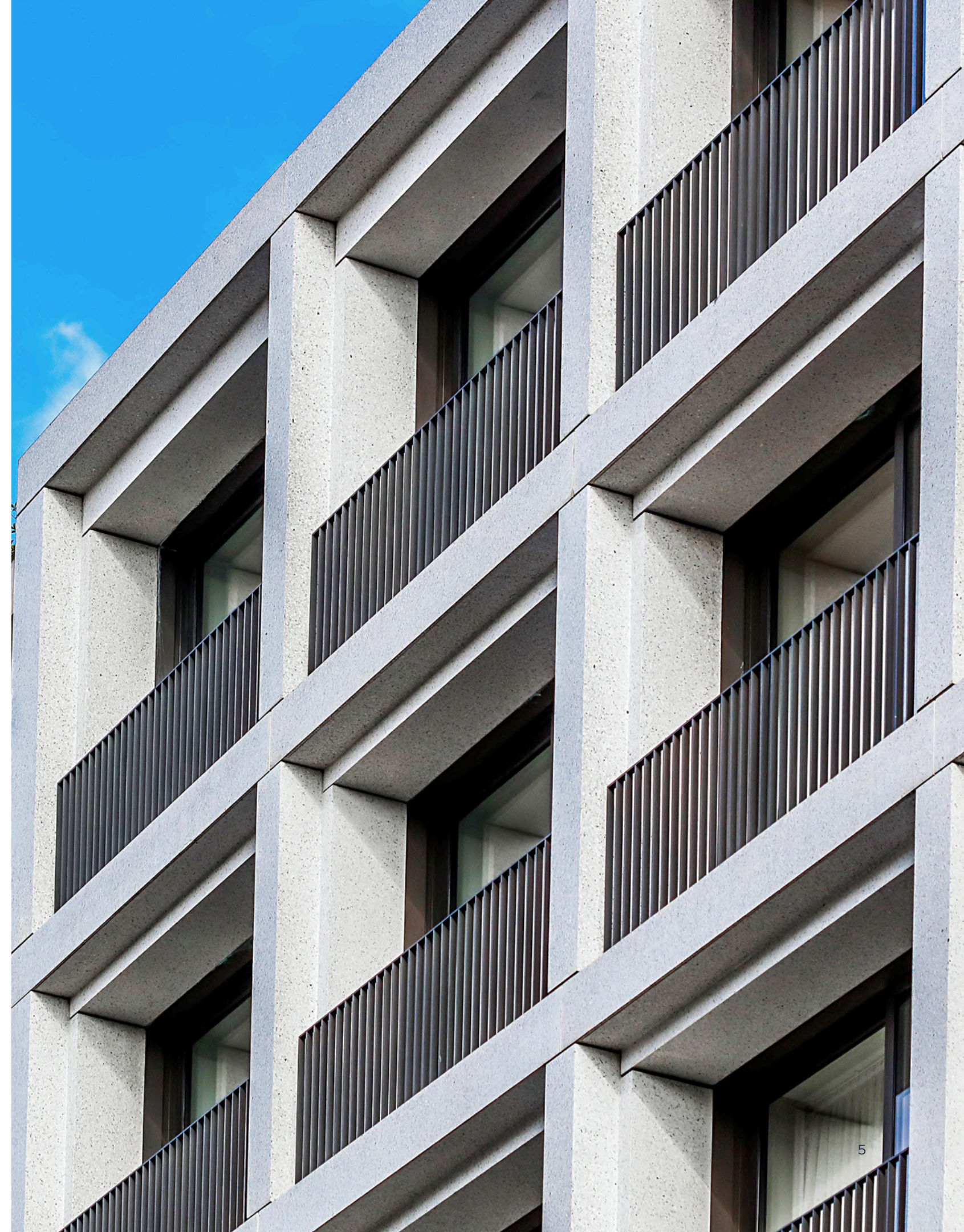
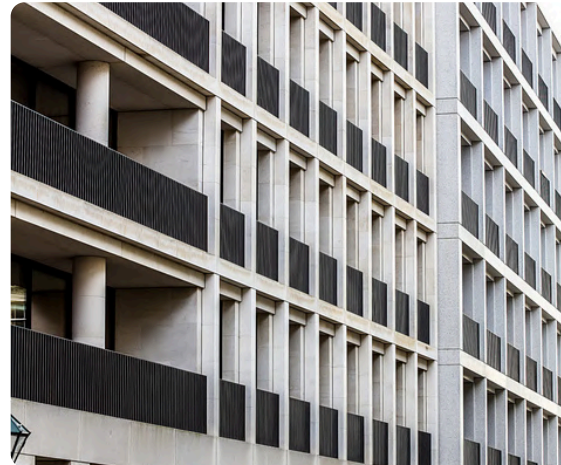
> POLISHED PROJECTS

DE VERE GARDENS, LONDON

Contractor: Sir Robert McAlpine | **Architect:** David Chipperfield Architects

Type & Finish: Reconstructed stone with polished & grit blasted finishes.

Project in Numbers: 168 panels, covering 1,600 sqm.



> POLISHED PROJECTS

ONE NEW LUDGATE, LONDON

Contractor: Skanska | **Architect:** Fletcher Priest

Type & Finish: Reconstructed stone fins, polished (ground floor) and acid etched.

Project in Numbers: 1,850 panels, covering 5,900 sqm.



> POLISHED PROJECTS

VICTORIA GATE, LEEDS

Contractor: Sir Robert McAlpine | **Architect:** ACME Studios

Type & Finish: Reconstructed stone diamond-shaped panels with a polished and acid etched finish.

Project in Numbers: 573 panels, covering 6,789 sqm.



> POLISHED PROJECTS

GATE & STILE, MEADOWSIDE, MANCHESTER

Contractor: Westfield | **Architect:** Jon Matthews and Chapman Taylor

Type & Finish: Reconstructed stone, brick look-a-like panels, polished finish.

Project in Numbers: 96 panels, covering 1,242 sqm.



> POLISHED PROJECTS

OPUS 6, HANOVER QUAY, DUBLIN

Contractor: Cairn Homes | **Architect:** McCauley Daye O'Connell Architects

Type & Finish: Reconstructed stone with acid etched & polished finishes.

Project in Numbers: 850 panels, covering 6,700 sqm.



> POLISHED PROJECTS

ALBERT QUAY, CORK

Contractor: Bam | **Architect:** Henry J Lyons

Type & Finish: Reconstructed stone with a polished finish.

Project in Numbers: 543 panels, covering 4,127 sqm.



> POLISHED PROJECTS

JURY'S HOTEL, LANCASTER QUAY, CORK

Contractor: Bowen Construction | **Architect:** Henry J Lyons

Type & Finish: Reconstructed stone with a polished finish.

Project in Numbers: 400 panels, covering 2,700 sqm.



> POLISHED PROJECTS

RIVERSIDE TWO, DUBLIN

Contractor: P. Elliot | **Architect:** KMD Architects

Type & Finish: Natural stone and reconstructed stone with a polished finish.

Project in Numbers: 520 panels, covering 4,820 sqm.



> POLISHED PROJECTS

ANN ROWLING CLINIC, EDINBURGH

Contractor: Mansell Construction | **Architect:** Keppie Architects

Type & Finish: Reconstructed stone with a polished finish.

Project in Numbers: 25 panels, covering 285 sqm.



> POLISHED PROJECTS

SCOTTISH POWER, GLASGOW

Contractor: Laing O'Rourke | **Architect:** Paige Park Architects

Type & Finish: Reconstructed stone with a polished finish.

Project in Numbers: 983 panels, covering 14,427 sqm.



> POLISHED PROJECTS

ATHLONE CIVIC CENTRE

Contractor: John Sisk | **Architect:** Keith Williams Architects

Type & Finish: Reconstructed stone with a polished finish.

Project in Numbers: 270 panels, covering 2,700 sqm.



> POLISHED PROJECTS

THEATRE ROYAL, GLASGOW

Contractor: Sandy Brown Contractors | **Architect:** Paige Park Architects

Type & Finish: Reconstructed stone with a polished finish.

Project in Numbers: 27 panels, covering 340 sqm.



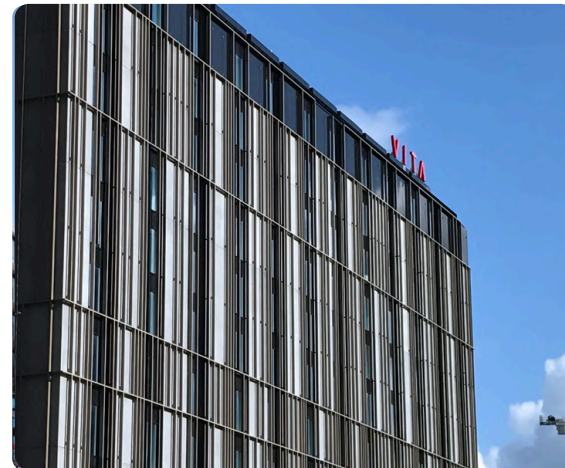
> POLISHED PROJECTS

SATELLITE CIRCLE SQUARE, MANCHESTER

Contractor: Wates Construction | **Architect:** 5 Plus Architects

Type & Finish: Reconstructed stone with a polished finish.

Project in Numbers: 423 panels, covering 5,226 sqm.



> POLISHED PROJECTS

GALWAY CLINIC

Contractor: McNamara Contractors | **Architect:** David Jordan Architects

Type & Finish: Reconstructed stone with a polished finish.

Project in Numbers: 350 panels, covering 3,528 sqm.



> POLISHED PROJECTS

NIBRT, DUBLIN

Contractor: John Sisk | **Architect:** Jacobs Architects

Type & Finish: Reconstructed stone with a polished finish.

Project in Numbers: 150 panels, covering 3,002 sqm.



> POLISHED PROJECTS

HILTON HOTEL, DUBLIN

Contractor: Walls Construction | **Architect:** James Smith Architects

Type & Finish: Reconstructed stone with a polished finish.

Project in Numbers: 250 panels, covering 2,500 sqm.



> POLISHED PROJECTS

GALLERY QUAY, DUBLIN

Contractor: Pierce Construction | **Architect:** HKR Architects

Type & Finish: Reconstructed stone with a polished finish.

Project in Numbers: 500 panels, covering 4,400 sqm.



> CERTIFICATIONS



ENERGY
ISO 50001:2018
NSAI Certified

> ISO 50001 - ENERGY



ENVIRONMENT
ISO 14001:2015
NSAI Certified

> ISO 14001 - ENVIRONMENT



QUALITY
ISO 9001:2015
NSAI Certified

> ISO 9001 - QUALITY



HEALTH
& SAFETY
ISO 45001:2018
NSAI Certified

> ISO 45001 - H&S



READY-MIX
CONCRETE
I.S.EN 206:2013
NSAI Certified

> IS EN 206 - CONCRETE



> SUSTAINABILITY CHARTER



> BUILDING REGULATIONS



> HEALTH & SAFETY



> 'VERY GOOD' RATING



> AEO AUTHORISED



V&A
OPEN
15
09
18